



Summary

Do you need your measured values on the PC without possibly buggy manual input via the keyboard?

EasyExport takes the input job from you. The interface of the PC is used to read the values of the KARL DEUTSCH instruments to be written to the currently active program (word processor, spread sheet, ERP and QA software and many more) according to your specifications.

PC Requirements

Operating Systems: Windows XP or 2000
 Interface: Serial (COM) or USB
 CD drive (other media on request)
 3.0 MB approx. free HD memory

Suitable Instruments

By default, the gauges ECHOMETER 1075, LEPTOSKOP 2018/2021/2026/2042 can be used with EasyExport since they become detected automatically.

The gauges ECHOMETER 1074, LEPTOSKOP 2041, DEUTROMETER 3872, RMG 4015 can be used with EasyExport as well. Identification, however, is manual.

Order Numbers

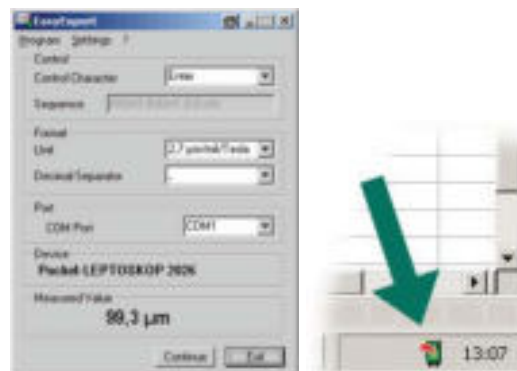
Software EasyExport on CD with operating notes : **2905.001**
 Cable to connect a measuring instrument to the interface of a PC: **depending on instrument**

Program Specifications

User Interface

Complete graphical design according to Windows® standards (push buttons, drop-down lists, etc). Language selection: German, English. After configuration EasyExport is minimised to the system tray of the operating system. Different symbols then show the current operating state.

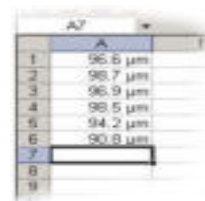
Configuration



Configuration menu (left) and symbol in the system tray of the operating system (arrow)

The box area **Control** is used to select the key or the key sequence which the PC automatically will "press" after transfer of the measured value. As with normal input via keyboard this will create columns or rows or input to fields of the receiving program. The inputs in the **Format** box determine whether the reading is entered together with a measuring unit and what decimal separator is to be used.

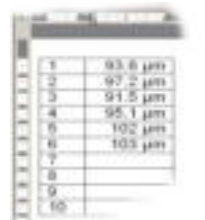
Example: Spread sheet



Relevant selections:

Control Character: ENTER
 Unit: 2.7 µm/mil/Tesla
 Decimal separator: .

Example: Table in a word processor



Relevant selections:

Control Character: DOWN
 Unit: 2.7 µm/mil/Tesla
 Decimal separator: .

All free interfaces of the PC are available when selecting the **Port**. If the instrument is fitted with automatic detection (see left, "Suitable Instruments") the box area **Device** shows the type designation of the currently connected gauge. The box **Measured Value** shows the current reading transferred via the interface.

Once the parameters are selected they will be memorised for next start-up of the program.