

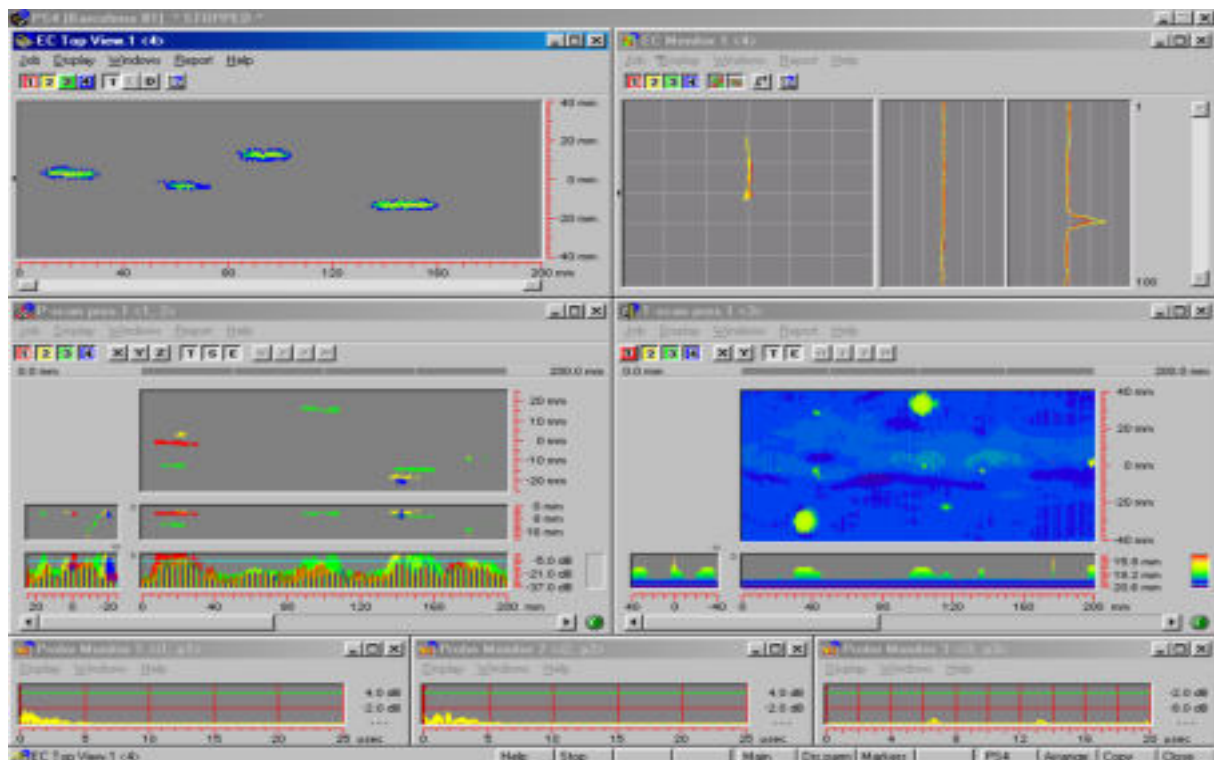


# P-scan 4 *Eddy Current*

The **P-scan 4 Eddy Current** option expands P-scan 4 *Flex* and P-scan 4+ with eddy current testing capabilities.

- The eddy current functions can be offered as an external module connected to the **P-scan 4+** and **P-scan 4 Flex**
- For **P-scan 4 Flex** the eddy current functions can also be offered as a built-in hardware option.

The software is completely integrated in the standard P-scan System 4 software, allowing concurrent operation of eddy current and ultrasonic testing modes. The eddy current data and ultrasound data are stored in the same job and can be analyzed in a combined analyze window using similar analyzing tools.



*Scan Mode Display showing EC scanning concurrent with P-scan and T-scan data collection*

## **Eddy Current Features**

- Eddy current system integrated into PSP-4F or PSP-4+
- 8 EC channels standard (32 channels option)
- Up to 4 frequencies per channel
- Extensive digital signal processing for high speed multiplexing
- Eddy current XY display and strip chart display
- Eddy current C-scan image display.

## **System Features**

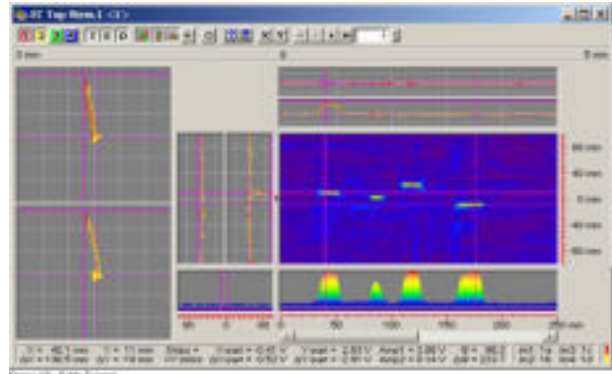
- System is operated using the standard P-scan System 4 software shell for setup, scanning and data analysis
- Eddy current mode operates concurrent with the standard UT modes (P-scan (weld inspection), T-scan (corrosion mapping), Through Transmission, TOFD and A-scan recording)
- Data from all modes (both UT and EC data) can be visualized and analyzed in the same window using similar analysis functions
- All FORCE Technology digital scanners can be used for eddy current scanning.

## Eddy Current Analyze Functions

Eddy current data can be analyzed in two different windows: A C-scan window (EC Top View) and a strip chart window (EC monitor).

### EC Top View:

The EC top view maps the eddy current data in a C-scan view. Data can be selected with markers and displayed in strip charts and in XY-plots.

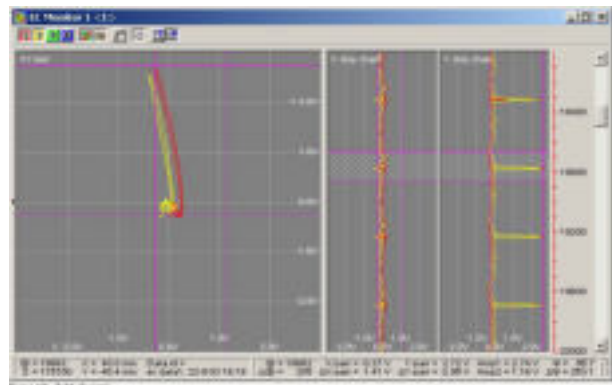


EC Top View

### EC Monitor:

The EC monitor can show the recorded data in a strip chart view. Data can be selected in the strip chart and displayed in an XY-plot.

In both windows support functions for calibration and analysis are available. These include automatic or manual gain and phase adjustment, measurement functions, and the possibility to readjust balance after scanning.



EC Monitor

## Technical Specifications for P-scan 4 Eddy Current

<b>Channels</b>	Number of channels:	8 (32 channels option)
	Number of frequencies:	Up to 4 per channel
	Frequency range:	5 kHz - 5 MHz (Low frequency option)
<b>Modes</b>	Measuring modes:	Eddy current
<b>System Functions</b>	Display modes:	C-scan, strip chart and XY plot
	Control functions:	Input gain, frequency select
	Analyzing functions:	Gain, phase offset, balancing
		Coupled markers between C-scan, XY-plot and strip chart view
	Data recording:	EC data recorded concurrently with UT data



Further information:  
 Leif Jeppesen, tel. (direct) +45 43 26 72 33, lej@force.dk  
 Jørgen Dam, tel. (direct) +45 43 26 73 13, jd@force.dk  
 www.p-scan.com - sales@p-scan.com

Subject to changes without notice

FORCE Technology USA Inc.  
 Tel. +1 713 975 8300  
 FORCE Technology Rusland LLC  
 Tel. +7(812) 326 80 92

FORCE Technology Norway AS  
 Claude Monets allé 5  
 1338 Sandvika, Norway  
 Tel. +47 64 00 35 00  
 Fax +47 64 00 35 01  
 info@forcetechnology.no

FORCE Technology Sweden AB  
 Tallmätargatan 7  
 721 34 Västerås, Sweden  
 Tel. +46 (0)21 490 3000  
 Fax +46 (0)21 490 3001  
 info@force.se

FORCE Technology, Headquarters  
 Park Allé 345  
 2605 Brøndby, Denmark  
 Tel. +45 43 26 70 00  
 Fax +45 43 26 70 11  
 force@force.dk  
 www.forcetechnology.com