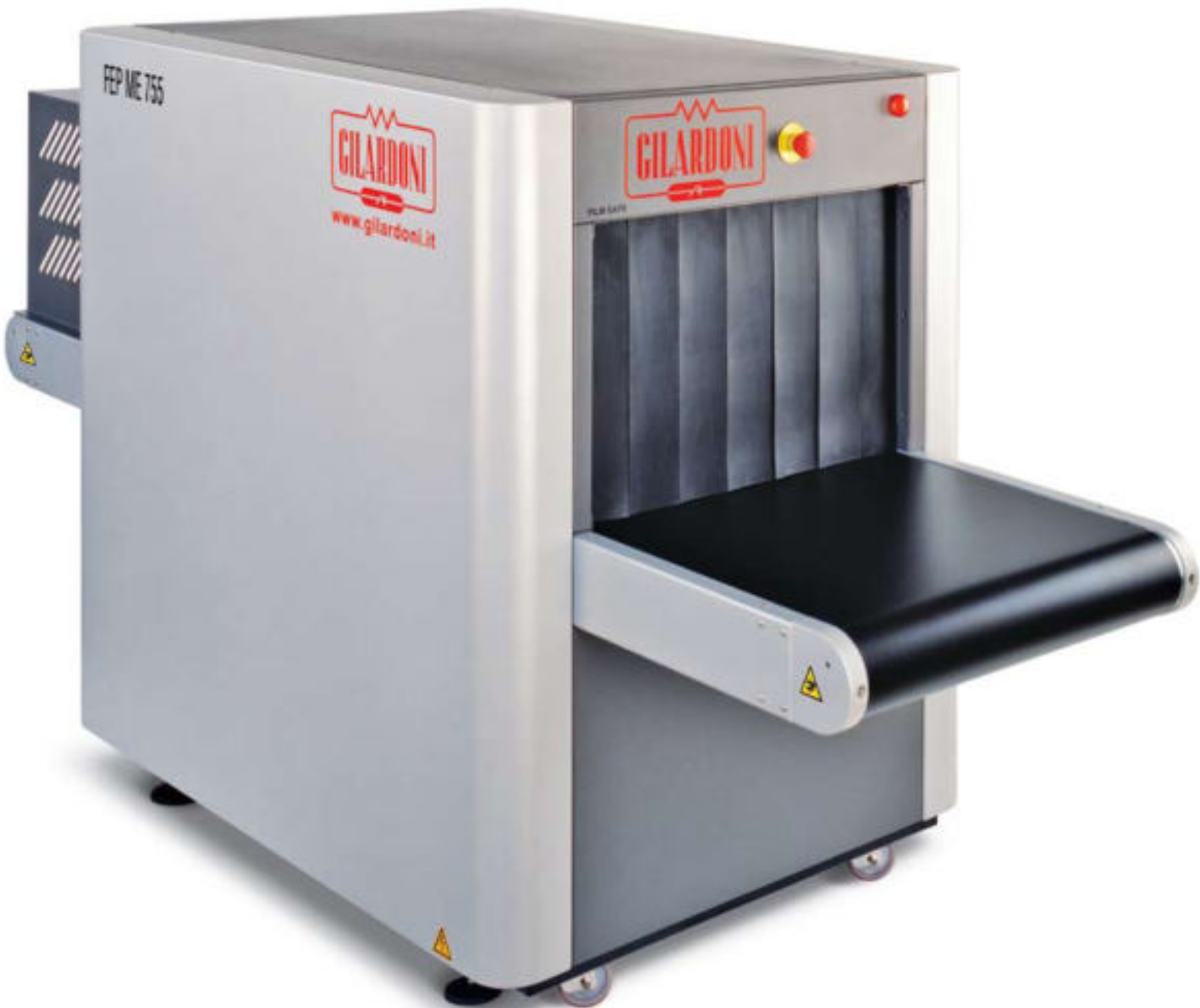


FEP ME 755



SECURITY TECHNOLOGY

A BRAND-NEW MACHINE

- New tunnel size 75cm x 55cm
- Superior B&W and color image quality
- Designed to show threat items and organic materials inside a hand-bag
- Ideal to scan items of any shape, thanks to the new photocell bar
- Feature state-of-the-art detection technology and PC data management software
- Advanced service software
- TIP complying with EU 23/2008
- Designed for networkability

A NEW IMAGE

- Completely renewed imaging software
- First-class penetration and resolution
- Real time "on-the-fly" image processing at 24-bit
- Automatic color coding of materials with different Z atomic number (organic, inorganic, metallic)

POWER TO THE OPERATING SYSTEM

- Based on Linux operating system
- User-friendly interface
- Multi-level access
- New digital archiving system
- Easy data import/export
- High interoperability
- Client-server platform
- Windows compatible



Black and white image: Details and definition



Color image: Materials with different Z

NETWORKING

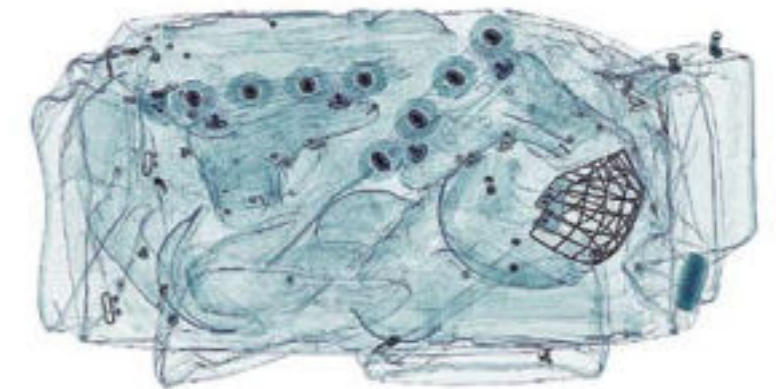
- Data sharing via network
- TIP reports and configurations accessible from supervisor station
- Central archive of all work sessions and images acquired on the network (networking AIMS)
- Management of network operating settings from a remote supervisor workstation
- Further screening with remote operator workstation(s)
- Multilevel inspection architecture
- Fully compatible with all Gilardoni equipment



Image with threat item and dark alarm

STANDARD IMAGE ENHANCEMENT FEATURES

- Organic/inorganic materials discrimination (low, medium and high Z)
- Continuous contrast variation
- Continuous variation of penetration levels
- Reverse Image
- Variable edge enhancement
- Energy stripping
- Pseudo colours
- Continuous zoom x2 up to x64 and rotozoom
- All features available "on the fly"
- Density alarm with adjustable threshold
- Image storage on removable devices
- Off-line post-processing on work sessions

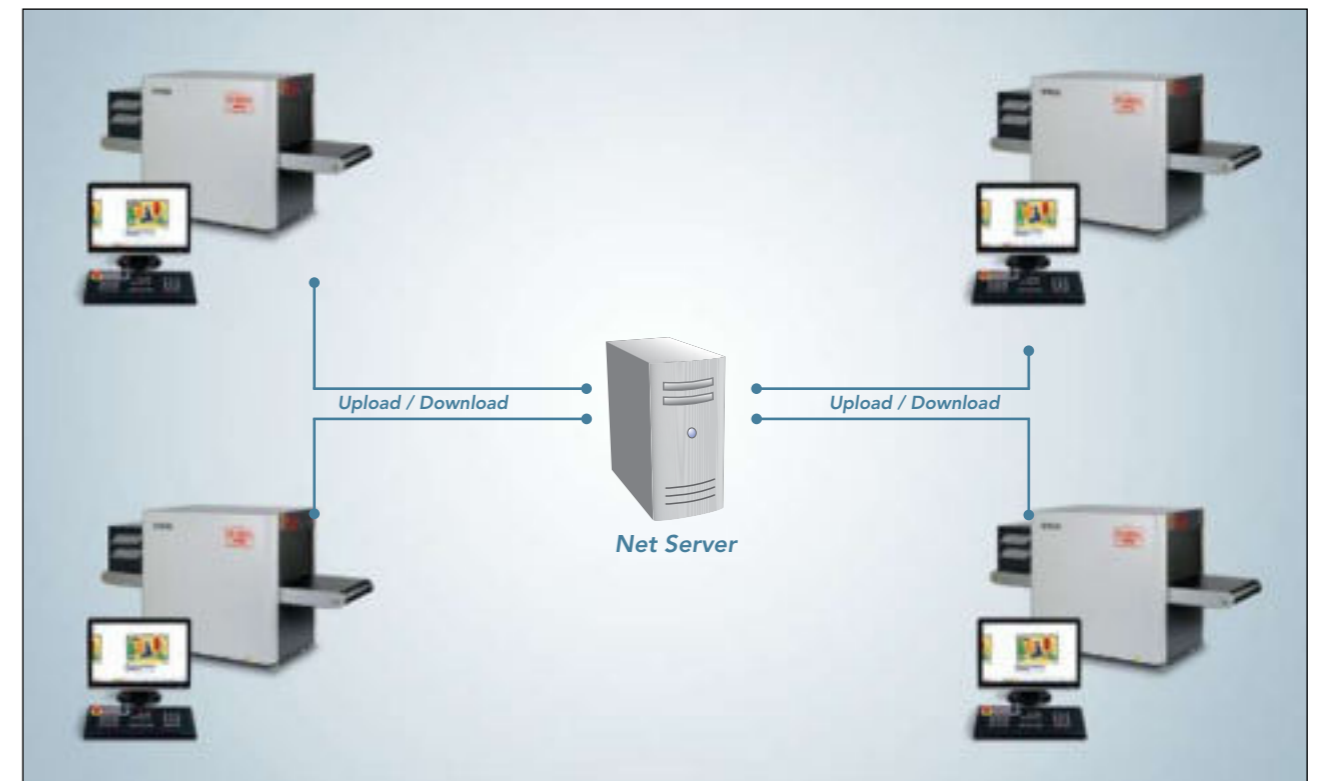


Baggage image with post-processing



Operator console with 19" widescreen LCD monitor

EXAMPLE OF NETWORK CONNECTION



TECHNICAL SPECIFICATIONS

Inspection unit

- Dimensions: 2630mm (L) x 1065mm (W) x 1462.50mm (H)
- Weight: 580kg
- Tunnel size: 756mm (W) x 550mm (H)
- Conveyor belt height: 735mm
- Belt speed: 0.2m/s
- Maximum bag weight: 200kg
- 1 17" CRT monitor SVGA, 1280 x 1024
- Power supply: Monophase 230VAC +/- 10%
- Frequency: 50Hz +/- 3Hz
- Power absorption: $\leq 1.5\text{kVA}$
- Duty cycle: 100%

X-Ray generator

- High frequency monobloc
- Tube voltage: 150kV
- Tube current tube: 0.7mA
- Beam Orientation: Diagonal upwards

Environmental compliance

- Operational temperatures: 0°C to 40°C
- Storage temperature: -20°C to +60°C
- Humidity: 95% without condensation
- Protection class: IP22
- Noise level: < 60dB

Detection characteristics

- Resolution: 38 AWG
- Penetration: 27mm guaranteed, 30mm typical
- 1152 detectors: In two "L"-shaped rows of photo-diodes

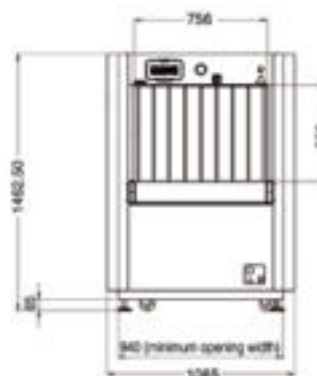
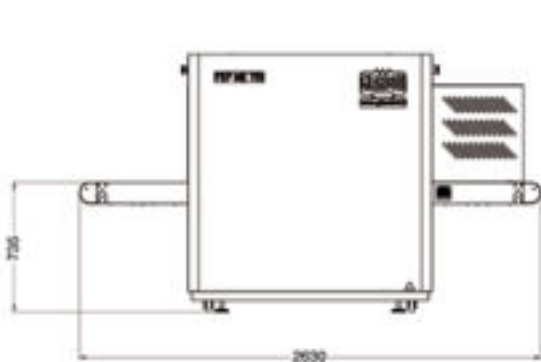
Health and Safety

- The system fully meets the applicable international regulations for X-Ray equipment
- Leakage dose at 10cm: < 1.0 $\mu\text{Sv/h}$ (0.1mR/h)
- Film safety: guaranteed up to ISO 1600/33 DIN

Options

- ADS
- TIP
- NetServer & TIPNet
- Digital image archiving (AIMS)
- AIMS Networking
- Modular roller tables
- 19" LCD monitors
- 19" LCD widescreen monitor
- Monitor enclosure
- Remote workstation(s)
- UPS

REFERENCE REGULATION: EC, IEC, TSA, STAC, DfT, ENAC



Dimensions in mm

Reserving the right to improve and modify

RESEARCH LABORATORIES acknowledged "Highly Qualified" with decree D.M. 9-10-1985 – L.46/82 art.4

Head office and facilities:

Via **Arturo Gilardoni**, 1 - 23826 Mandello del Lario (LC) - Italy
tel. (+39) 0341-705.111 - fax (+39) 0341-735.046
e-mail: gx@gilardoni.it - www.gilardoni.it

Export department:

tel. (+39) 0341-705.311 - 0341-705.224 e-mail: secur.export@gilardoni.it

