

**KARL DEUTSCH**

Prüf- und Messgerätebau

**KARL DEUTSCH**

ZfP seit 1949!

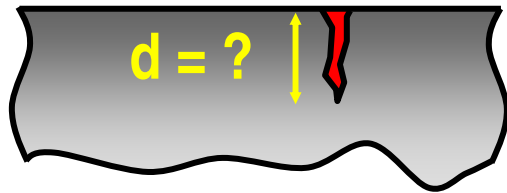
*NDT since 1949!*



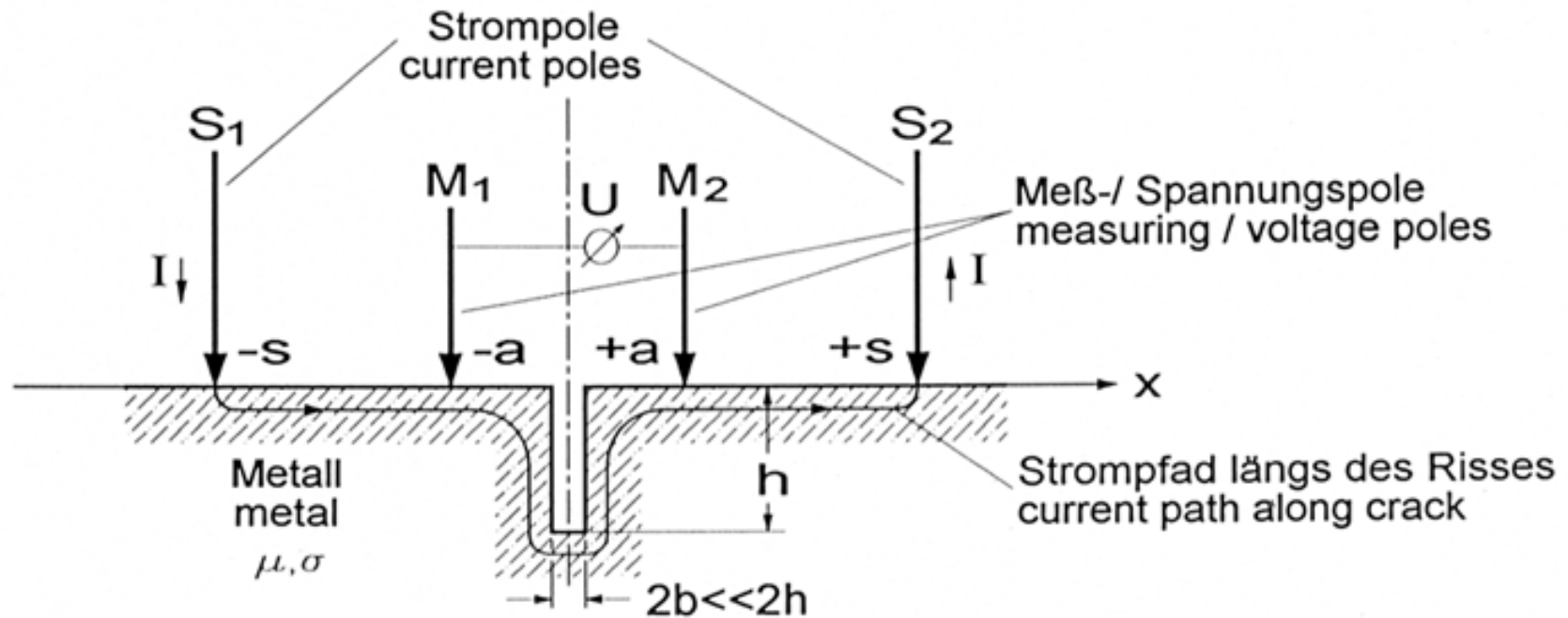
**RMG-Risstiefen-Messung** *RMG Crack Depth Measurement*



Drei Generationen *Three Generations*

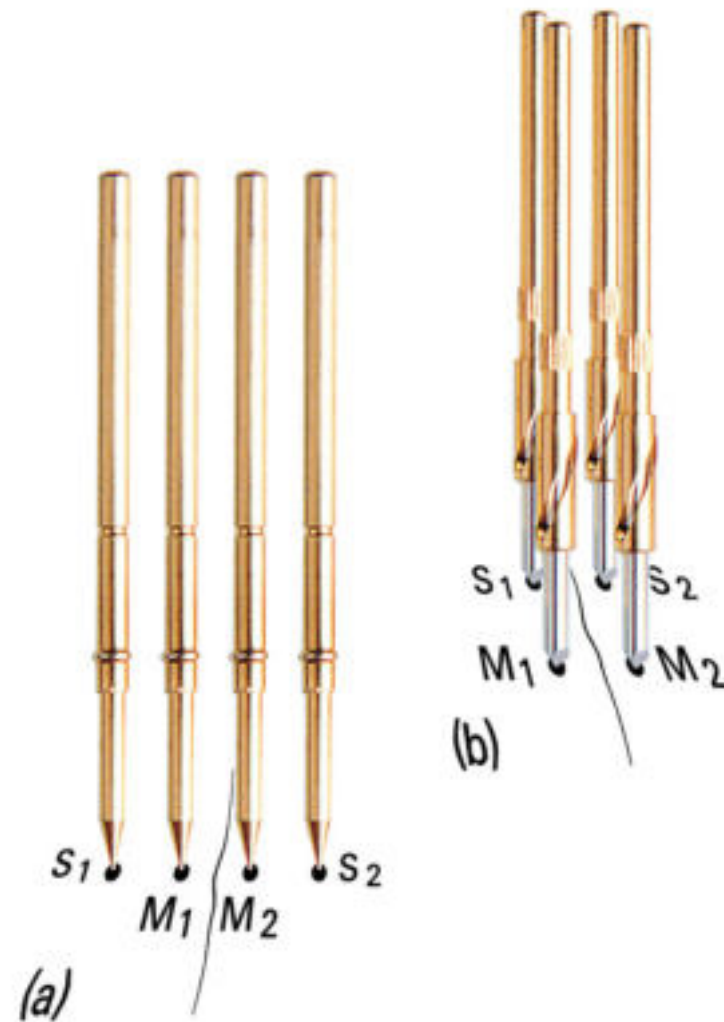
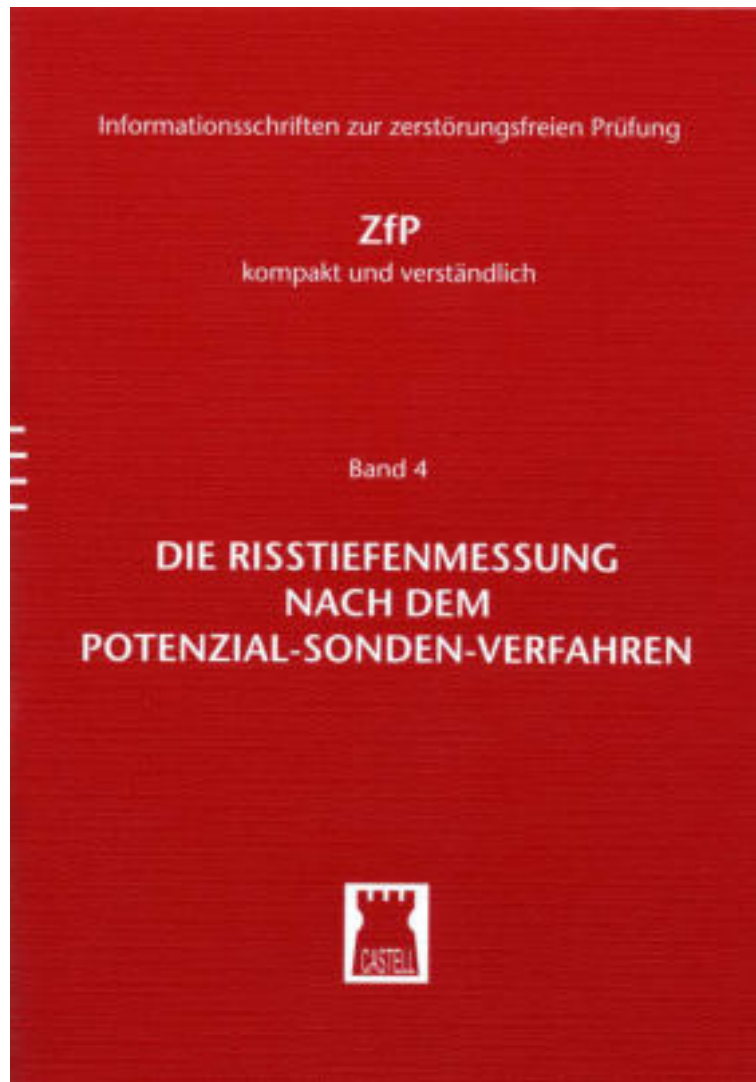


**RMG Risstiefen-Messung** *RMG Crack Depth Measurement*

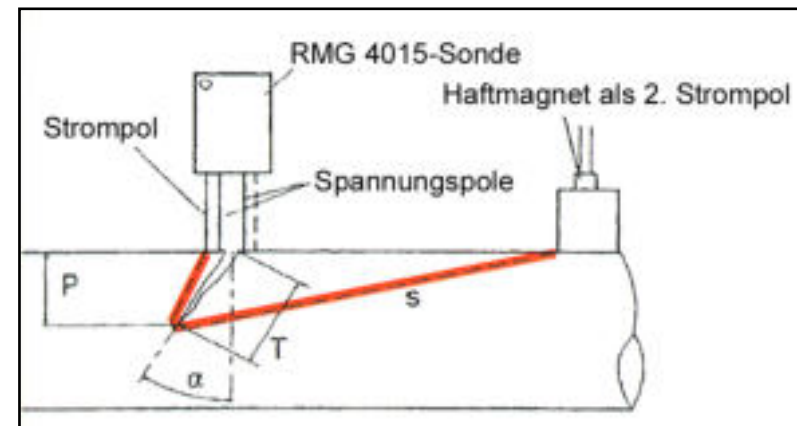
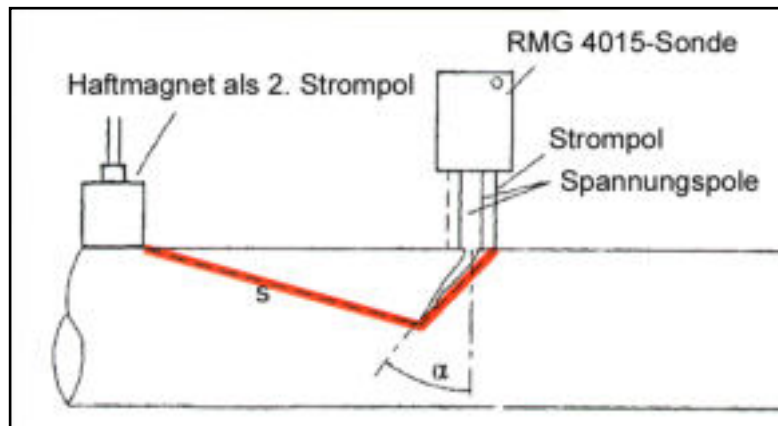


Wechselstrom !!  
*Alternating Current !!*

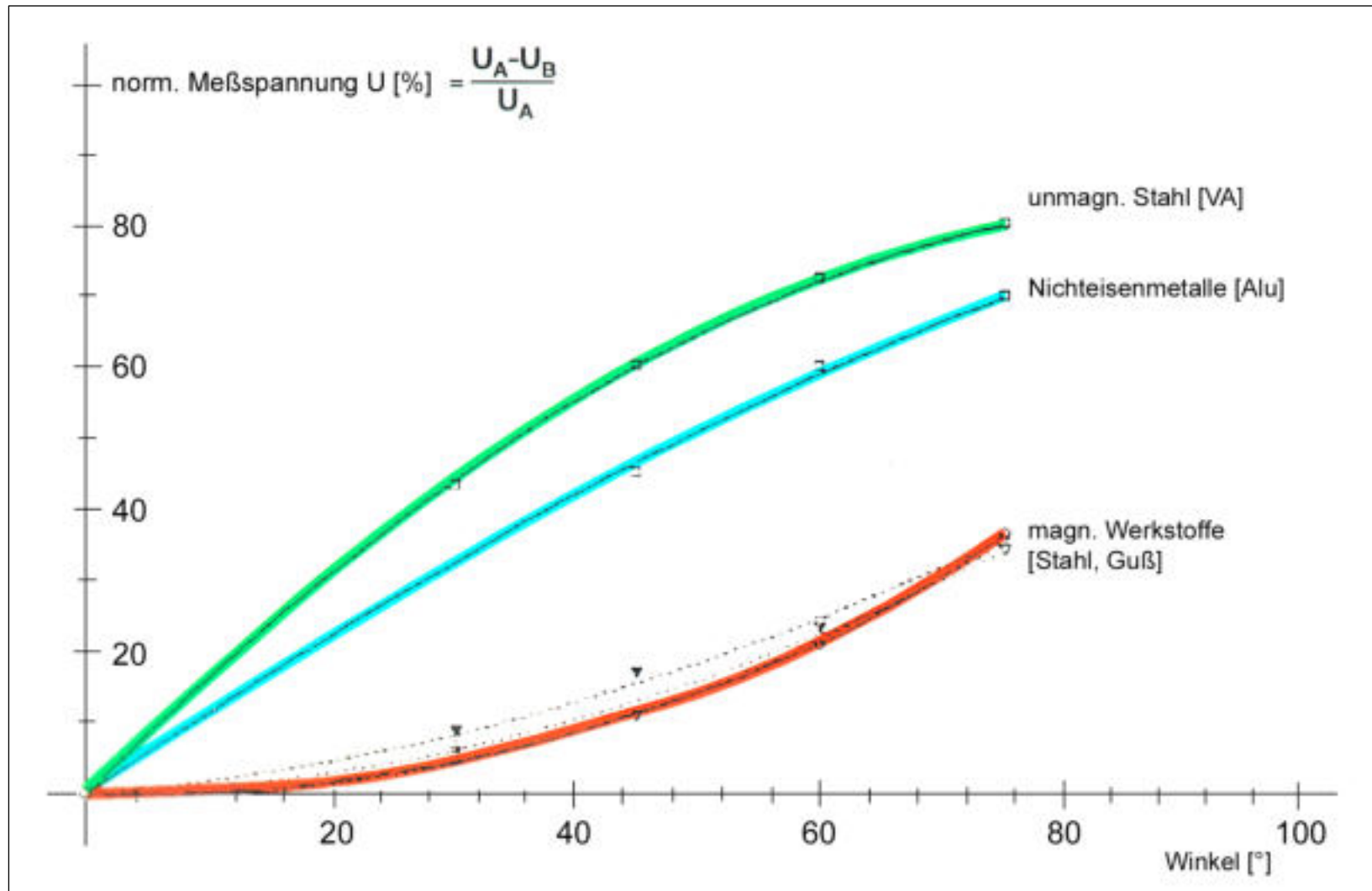
Prinzip *Principle*



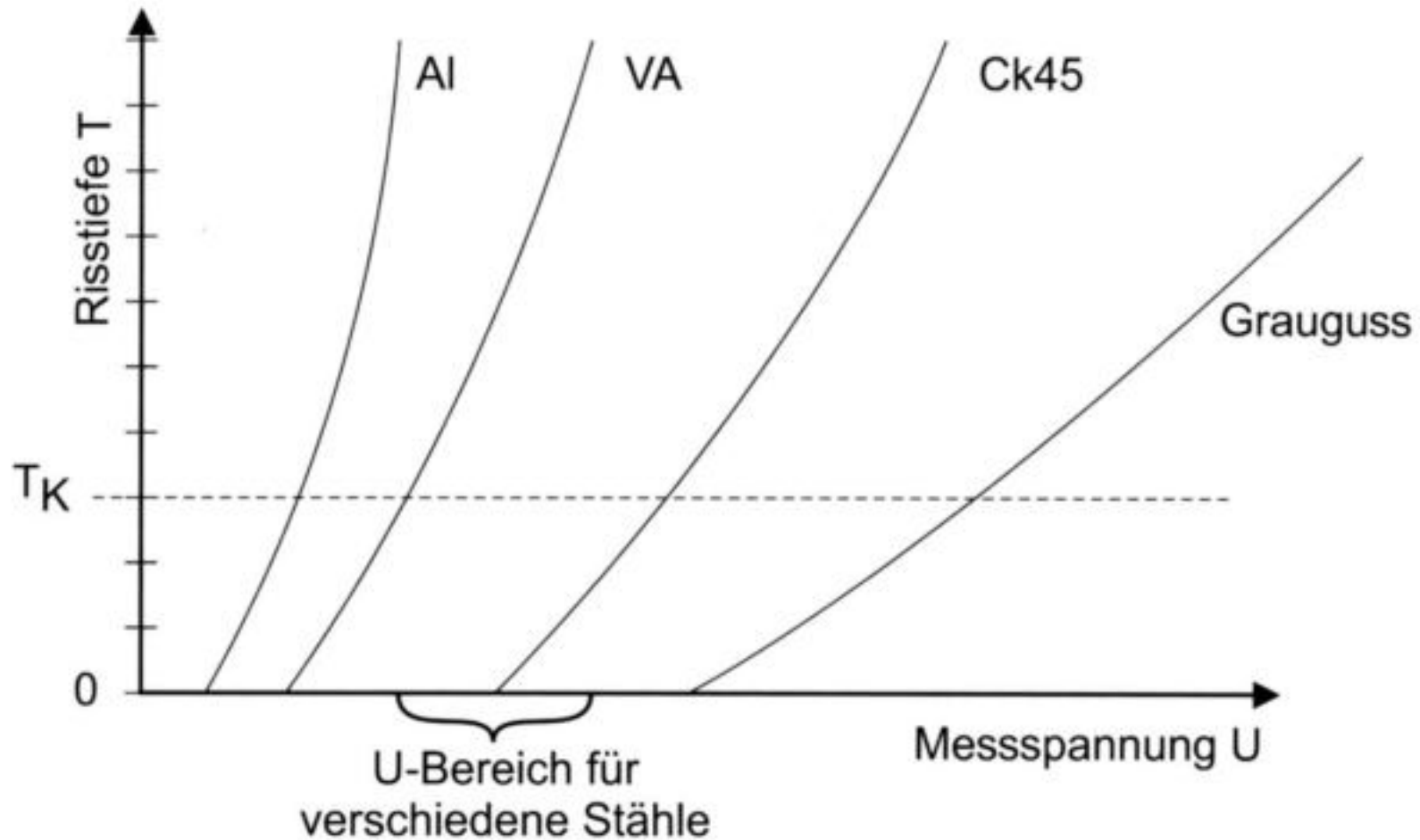
Literatur **KD Books**



## Schräggrissbestimmung *Oblique Cracks*



$$P = d * \cos \alpha$$



Materialkennlinien *Material Characteristics*



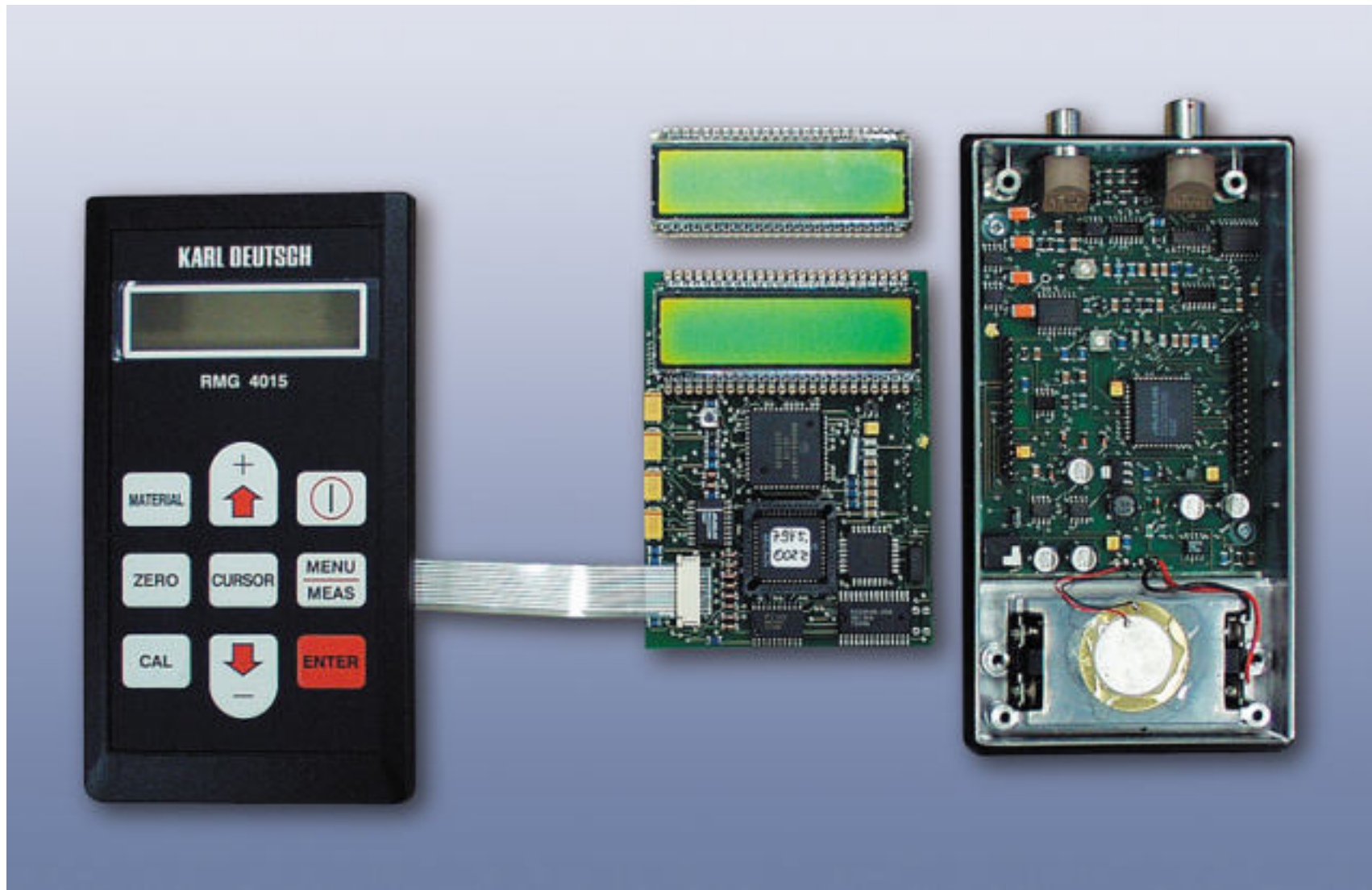


Sondenintegrierter Verstärker und Kennlinienspeicher realisieren materialspezifische Kalibrierungen und störungsfreies Übertragen kleinster Messspannungen.

*Material data is stored in micro-electronics*

*Amplifier integrated into sensor, i.e. transfer of SMALL voltages with high SNR*

**Intelligente Sonden** *Intelligent Sensors*



modular & service-freundlich *modular & service-friendly*

- modularer Aufbau
- moderne Elektronik
- Servicefreundlich
  
- *modular design*
- *modern electronics*
- *service-friendly*

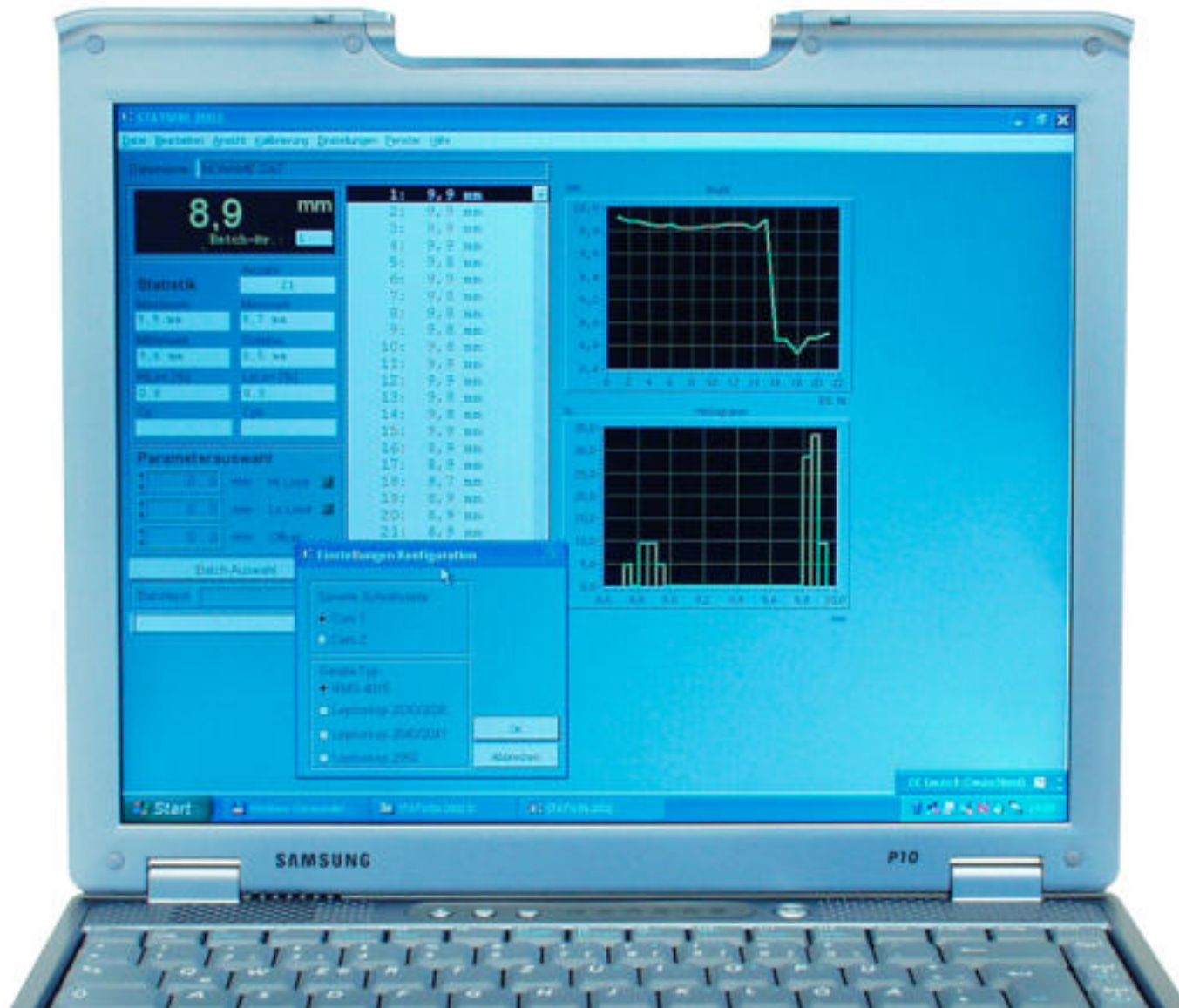


Integrierte Mikro-Elektronik *integrated micro-electronics*



Messwertausgabe mit vielfältigen Möglichkeiten!  
Ausdruck vor Ort, Anschluss an einen PC oder  
Integration in Datennetze.

**Datentransfer** *Data Transfer*



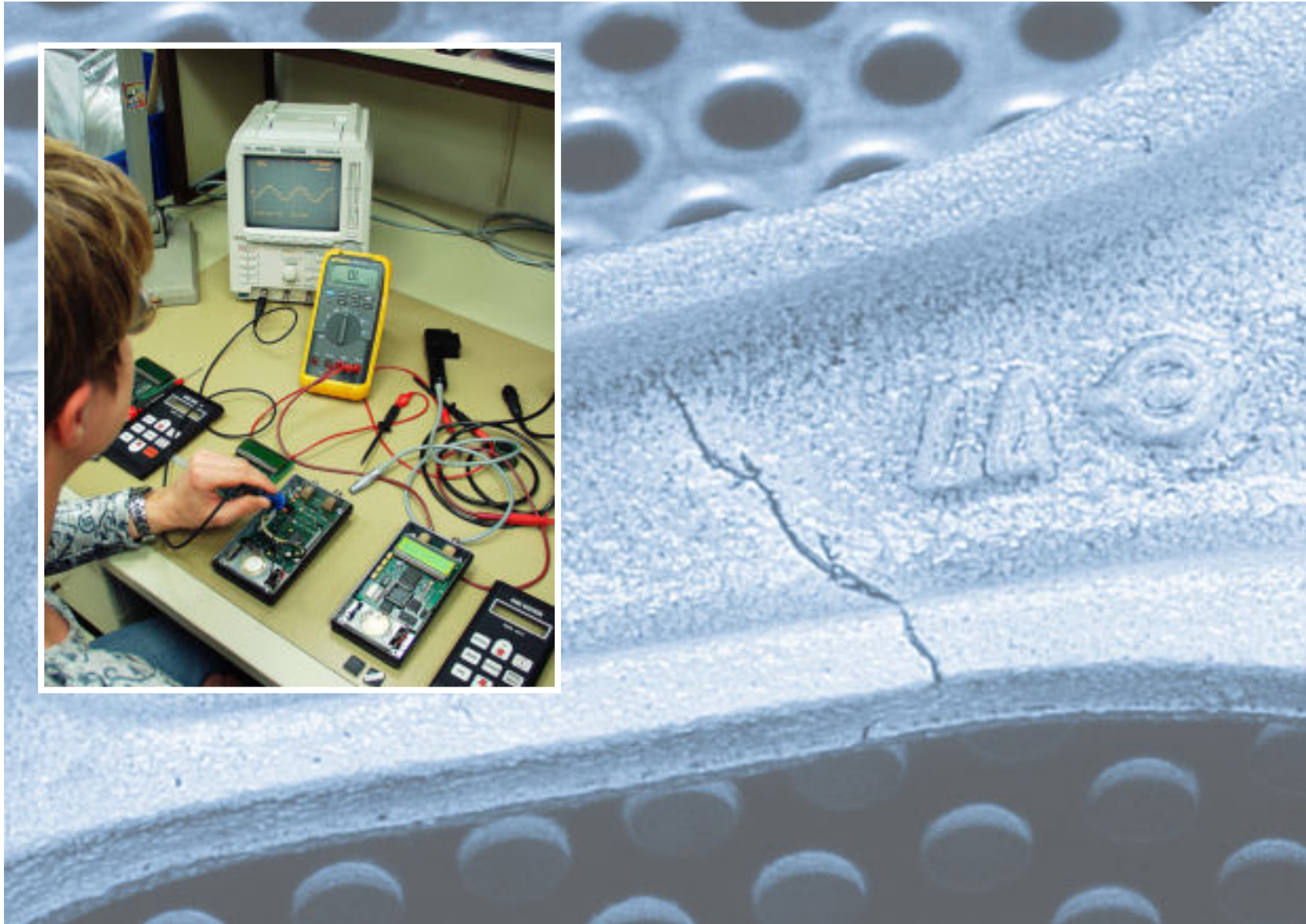
Software „STATWIN 2002“ *Software*



**Moderne Fertigungsstätten** *Production Facilities*



Kalibrierung *Calibration*



End-Prüfung vor Auslieferung *Final Inspection prior Shipment*



# KARL DEUTSCH

The collage shows three overlapping certification documents from Karl Deutsch:

- Top Document:** 'Bescheinigung zur Rückführbarkeit' (RMG 4015) for a 'KARL DEUTSCH' device. It includes a table of test results and a declaration of reliability.
- Middle Document:** 'Abnahmegprotokoll / Acceptance Report' (RMG 4015) for 'TRONICUM STEEL'. It contains technical specifications and a checklist of requirements.
- Bottom Document:** 'DIN ISO 9001' certificate for 'Westfälischer Prozess / Importiers Tätigkeiten'. It details the company's quality management system.

**TÜV CERT**  
**CERTIFICATE**  
 The TÜV CERT Certification Body of Rheinisch-Westfälischer TÜV e.V. hereby certifies in accordance with TÜV CERT procedure that

**KARL DEUTSCH**  
 PRÜF- UND MESSGERÄTEBAU GMBH & CO. KG  
 42115 Wuppertal  
 Germany

has established and applies a quality system for

Non-destructive testing equipment serial products, including ultrasonic probes and chemical products

An audit was performed, Report No. 2698379  
 Proof has been furnished that the requirements according to  
**DIN EN ISO 9001 : 1994**  
 are fulfilled. The certificate is valid until **March 2003**  
 Certificate Registration No. **041803285**  
 The company has been certified since **1993**

**RWTÜV**  
 TÜV CERT Certification Body of Rheinisch-Westfälischer TÜV e.V.

Zertifikate *Certificates*

spezielle Messaufgaben ?  
Kein Problem für KARL DEUTSCH !

*special applications ?*

*No problem for KARL DEUTSCH !*



Sonden Sonderbauformen *Special Probes*



*Advice on-site & via  
phone, please ask our  
applications laboratory*

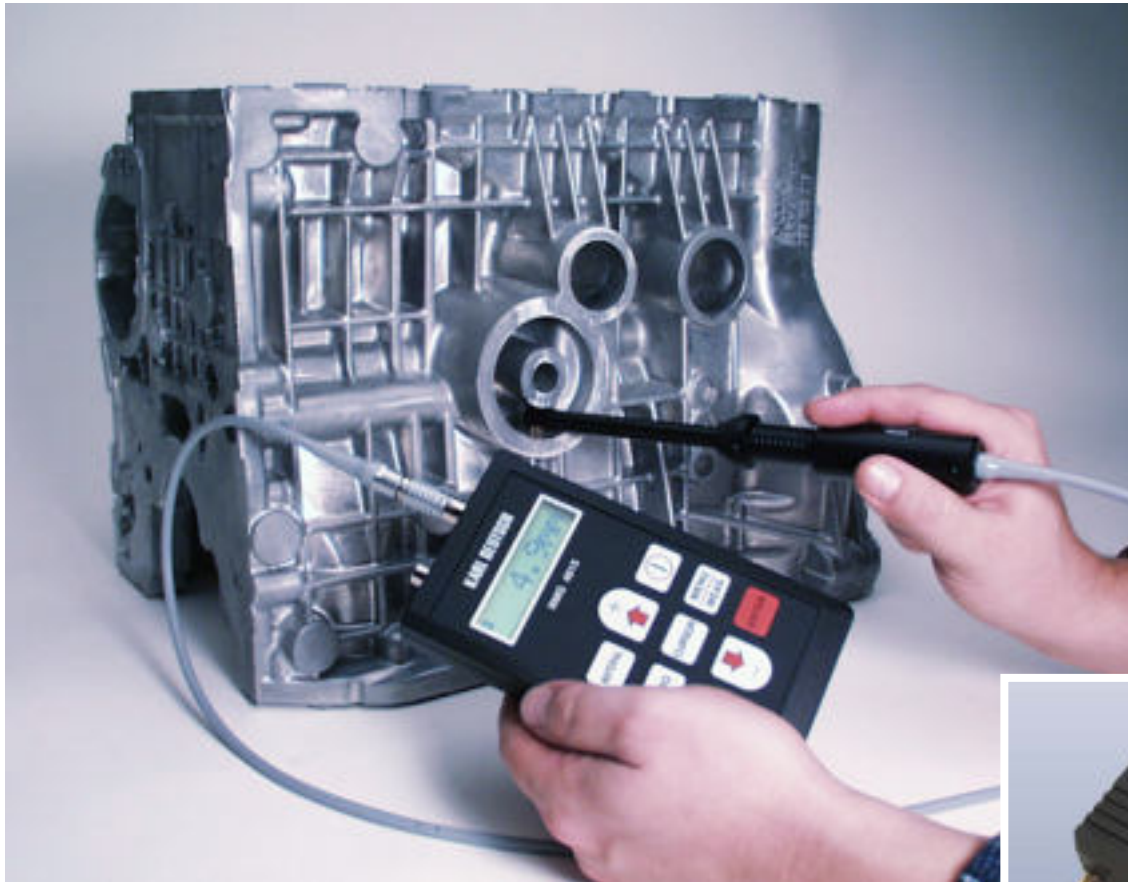
**Beratung vor Ort & am  
Telefon, fragen Sie unser  
anwendungstechnisches  
Labor**



**Sonder-Risstiefensonden** *Probes for Special Applications*



**Sonder-Risstiefensonden** *Probes for Special Applications*



Sondermaterialkennlinien *Special Materials*



**Anwendungen**  
*Applications*





Anwendung Gußteil *Application Casting*



Anwendungen *Applications*



**KARL DEUTSCH**



# KARL DEUTSCH

Risstiefenmessung *Crack Depth Measurement*

